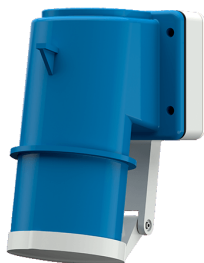


壁装式相位转换装置插头
货号 3348

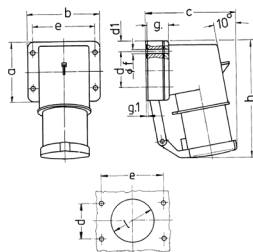


- # 带螺钉接线端子
- # 带铰链翻盖

技术信息

| | |
|------|----------|
| 伏特 | 16 A |
| 极数 | 4 p |
| 电压 | 230 V |
| 钟点位置 | 9 h |
| 赫兹 | 50-60 Hz |
| 连接方式 | 螺钉连接 |
| 触点 | 标准 |
| 防护等级 | IP 44 |
| 重量 | 210 克 |
| 认证标志 | EAC |

图纸



| Drawing 2 MB 43 | Amp. Poles | 16 | | 32 | | |
|--|---------------|------|------|-----|-----|-----|
| | | 4 | 5 | 3 | 4 | 5 |
| Dim. in mm | a | 85 | 85 | 75 | 75 | 75 |
| | b | 85 | 85 | 90 | 90 | 90 |
| | c | 104 | 106 | 115 | 115 | 117 |
| | d | 64 | 64 | 45 | 45 | 45 |
| | d1 | 10 | 10 | 13 | 13 | 13 |
| | e | 64 | 64 | 78 | 78 | 78 |
| | f | 5.5 | 5.5 | 5.5 | 5.5 | 5.5 |
| | g | 27 | 27 | 27 | 27 | 27 |
| | g.1 | 2 | 2 | 1 | 1 | 1 |
| | h | 140 | 140 | 150 | 150 | 150 |
| | l | 50 | 50 | 55 | 55 | 55 |
| Terminal for cond. cross section (mm ²) min.-max. | | 1 | 1 | 2.5 | 2.5 | 2.5 |
| | | -2.5 | -2.5 | -6 | -6 | -6 |